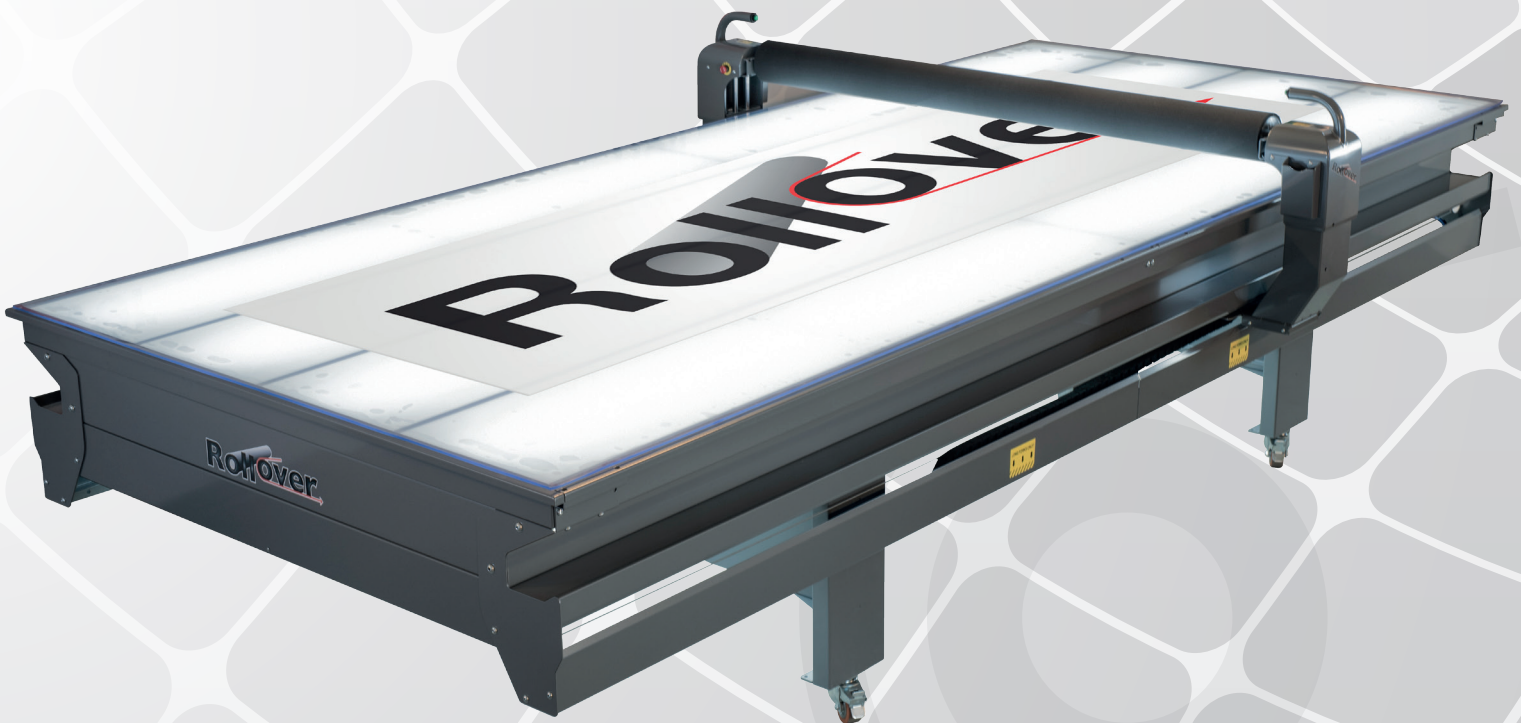


# Rollover<sup>®</sup>

## Flatbed Applicator



**Rollover** →

The Art of Laminating



# Rollover<sup>®</sup> Flatbed Applicator

The innovative Rollover Flatbed Applicator simply offers a better way of solving the daily challenges of the sign making industry. The excellent functionality is powered by the idea of facilitating and streamlining the multiple tasks encountered in the daily work of signmakers. Regardless of media type such as self-adhesive foil applications, road signs, glass application, banners etc. up to 90mm in thickness, the Rollover will ensure a perfect result at a minimum of time.

Optimal ergonomic work positions have been the basis for the design. Being able to comfortably operate the laminator with one hand whilst having free access to roller, media and tabletop, results in smooth and effective handling. We can guarantee that the operator will not miss the climbing and knee-bending... Perfectly flat application without bubbles or creases is obtained in a minimum of time, and waste is minimised. Illuminated glass tabletop and special cutting mat will improve accuracy and control in operation, and also make the Rollover a perfect work place for many other tasks of the trade.

The Rollover is extremely user-friendly, and the operator can learn how to use it in less than one hour thanks to the detailed Manual supplied on delivery. Flexible extra media-holders and side trays facilitate numerous applications and handling of oversize media. The gap between roller and tabletop accommodates different substrates up to 90mm thickness.



# Areas of use

## **Rigid panel application**

Applying digital prints and other self-adhesive applications on rigid panels e.g. correx, foames, dibond, aluminium etc., is just one of the areas where the Rollover reveals its excellent properties in result and operation. Substrates up to 90mm thick can be handled for perfectly flat applications without bubbles or creases.



## **Application on glass- and acrylic substrates**

Also when applying digital prints or application tapes to glass- and acrylic plates, the Rollover demonstrates its high level of efficiency and flexibility. The roller pressure ensures perfect result without any use of water.







# Areas of use

## Application tape wind up

Executing frequently occurring tasks like the use of application tape, is easily transformed into a «One man- or one woman show». By using the extra media holders, the full width of the tabletop can be utilised. Besides the perfect result, great savings in time and cost are obtained by using the Rollover Laminator.



## Laminating digital prints

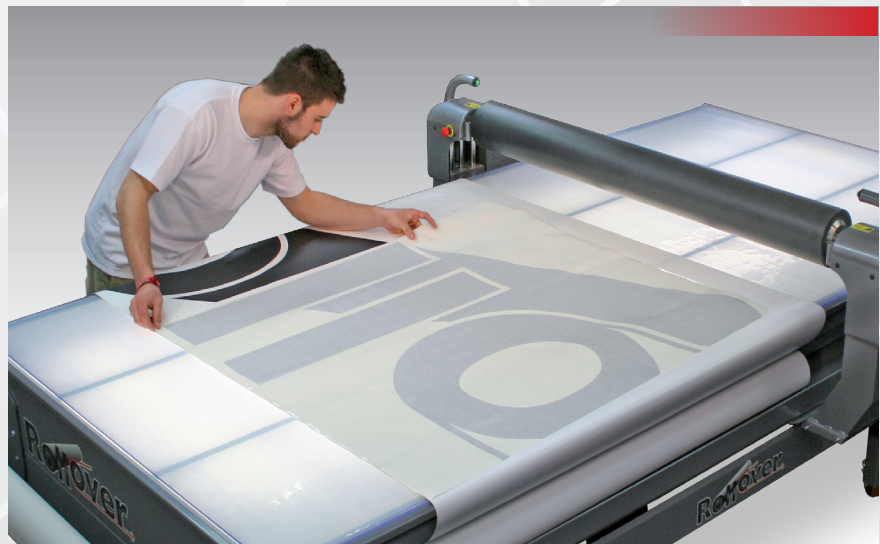
The great flexibility of the rollover laminating system is already evident in conventional laminating in which digital prints may be coated with protective laminates. Especially when using formats covering the full working surface of the Rollover, these jobs can be done quickly and without bubbles or creases.



# Areas of use

## Assembly of oversize media

By using the generously spaced side shelves, wide banners or other oversize media can be handled across the tabletop. This allows e.g. multi-line foil labels and digital prints to be transferred to large formats.



## The Rollover as work station

Last but not least, when cutting on the self-healing cutting mat or even working with flexible skins and hoardings, Rollover offers with its back-lit work area the best basis to cope with an advertising technicians everyday strive.





# Rollover® The advantages

## Free access to the roller

One of the most significant advantages of the Rollover Applicator is the free access to the main element when laminating – the roller. The patented design with no gliding beam above the roller accommodates in an unobstructed manner all sorts of laminating jobs. The easy handling enables one individual to operate most applications, leading to considerable savings in time and cost.

## Easy one-hand operation

By using the ergonomically shaped and inward-facing handles, the roller can be moved easily over the tabletop both in a raised and lowered position.

## Protected activation button

Being positioned at the end of the inward facing handles, the activation button for raising and lowering the roller is protected against unintentional use. This reduces substantially the risk of work accidents.

## Solid, illuminated work station

Even the standard version Rollover comes with an illuminated glass tabletop. This is a great help in every task demanding high level of accuracy e.g. positioning of detailed graphics on glass and transparent acrylic. The self-healing cutting mat provides increased functionality and flexibility of this work station. When designing the laminator, great attention has been paid to the solidity of the construction and a high level of craftsmanship.





### Flexible media holders

In both ends of the table, flexible media holders allow for extra media when needed.

### Special media holders for application tape.

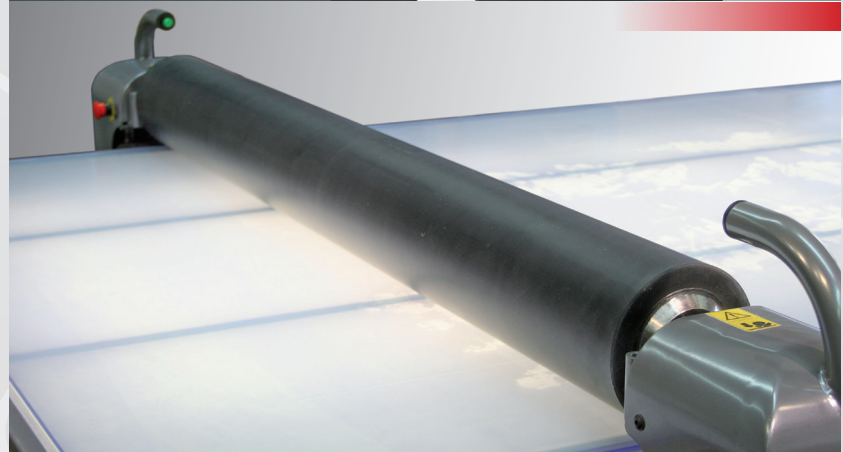
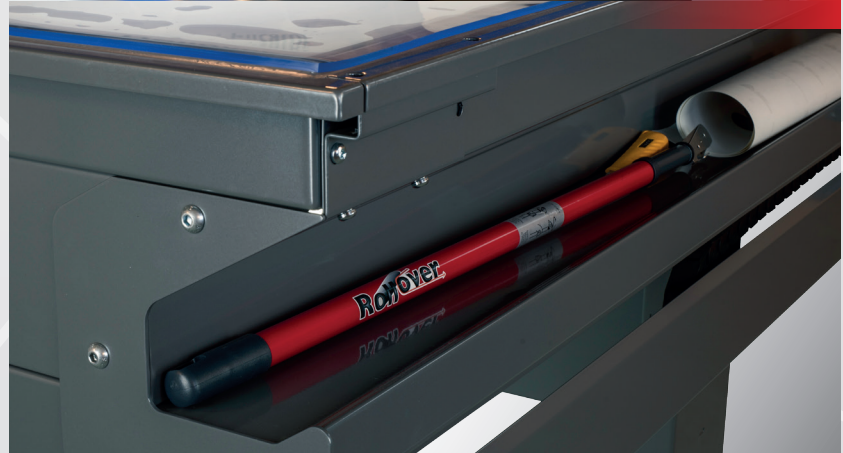
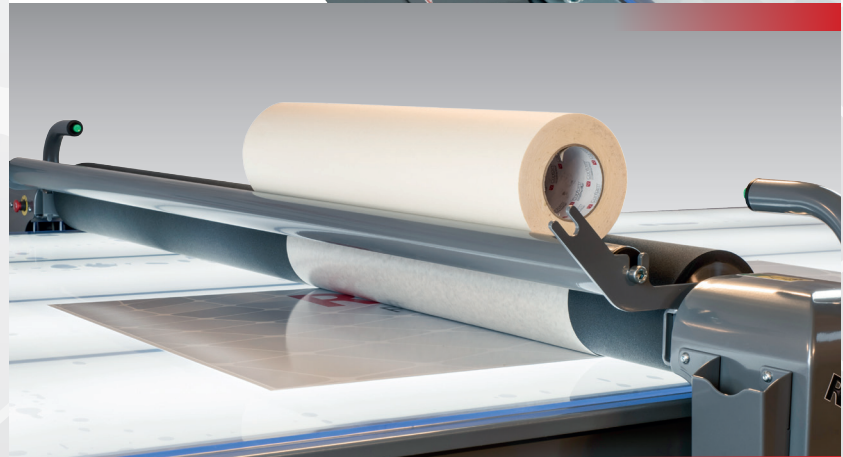
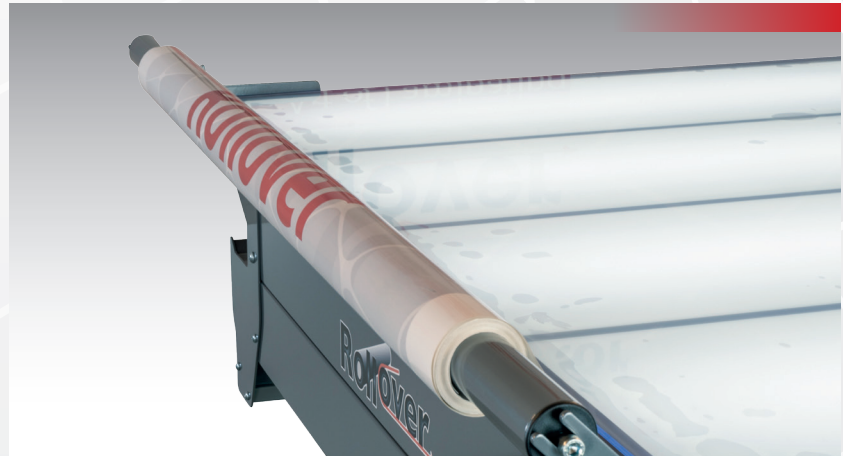
At both ends of the roller, reversible holders for application tape can be attached. This simplifies and improves the application, reducing waste and time spent.

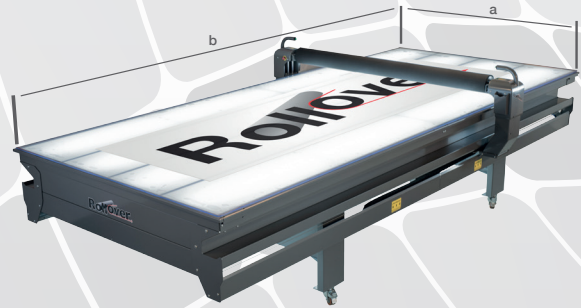
### Bilateral feeding trays

Along both sides of the Rollover, the generously shaped side trays will provide space for tools and rolls of oversize media.

### Larger and optimised

Different from some competitors, the Rollover comes with a antistatic rubber-coated roller of 130mm in diameter. This secures an even pressure over the tabletop and subsequently high quality when applying.





## Technical Data

Model size in cm (a x b)	140 x 300	170 x 300	140 x 400	170 x 400	140 x 600	170 x 600	140 x 800	170 x 800
Glass bed working area	140 x 300	170 x 300	140 x 400	170 x 400	140 x 600	170 x 600	140 x 800	170 x 800
Working area of roller	140 x 270	170 x 270	140 x 370	170 x 370	140 x 570	170 x 570	140 x 770	170 x 770
Roller diameter in mm	130	130	130	130	130	130	130	130
Approx. weight in kg	510	660	610	780	940	1200	1080	1300
Illumination, LED	173W	231W	231W	308W	346W	462W	462W	616W

Steel edge outside glassbed	Add 30mm on each side
Max.thickness of sign substrate in mm	90 mm
Gap between steel edge and console*	75 mm
Work height glass bed	900 mm
Power supply	230V/50Hz/24V – 120V/60Hz/24V

\* Available space for large formats placed in the side trays.

## Key Features

YES

Inward facing & protected activation switch	x
Ergonomic handles for roller operation	x
Rounded housings – no sharp edges	x
Free view to roller	x
Unobstructed access to the roller	x
Sidetrays for large formats on both sides	x
Holder for media rolls in both ends of the table	x
Reversible extra brackets for application tape	x
Self-healing cutting mat	x
Illuminated glass bed	x
Castors	x

## Optional Features

YES

Height adjustable legs - electrically driven	x
Heat assisted roller - 30°C - 50°C	x
Twin rollers	x

## Accessories & Consumables

Antistatic Equipment, self-healing cutting mats, Long Range Cutter, compressors etc. is sold via our network of distributors. Please contact your closest dealer or send us a mail on: [rollover@rollover.no](mailto:rollover@rollover.no) for more information.

**Rollover is Made in Norway by:**  
BRDR. HANSEN AS

Watch our videos on your smartphone:

